

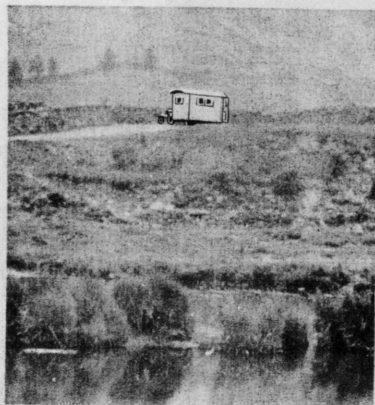


Reprinted from "The Autocar" of July 16th, 1926, by the kind permission of the Editor.

CARAVAN JOYS

IT is when summertime is on us that we crave for the open spaces, and so it was with more than ordinary enthusiasm that we made ready for the first trip of the season. Our road this time was the road to Wales, that lovely little land that is as surely the playground of Midland England as Switzerland is of Europe, and the car and caravan used were the same as mentioned in the account of our Scottish tour last summer, the former our nine-year-old Sunbeam, and the caravan a 9ft. 6in. Eccles trailer.

A word or two about preparations may not be out of place for such as have not previously caravanned, for



the old dictum that what is worth doing at all is worth doing well applies to this as to other things, and much of the comfort, and consequently the pleasure, of a

caravan trip depends on how these are carried out; they may briefly be described as follows:—

MAKING PREPARATIONS.

The car itself is obviously lord of the situation, both as the conductor of the caravan, and as providing a means of getting about whenever the latter is stationed on its pitch; but as the process of a general look round (the due provisioning with petrol and grease, and an inspection of the tyres and the tool-box, etc.) differs in no respect from what any sensible motorist practises before setting out on a tour, this need not be dwelt upon.

The Caravan.—If this has been unused during the winter months, it needs dusting out, and, of course, the convertible couch beds require airing, which latter can best be accomplished by lifting them out into the sunshine for a few hours, or, failing that, placing them in front of the kitchen fire. The bed clothes should receive similar attention, unless they have been stored in an airing cupboard, and among them I would recommend the inclusion of an eider-down.

Food.—In addition to bread, butter, cheese, tea, coffee, sugar, and groceries in general, including small items such as salt, pepper, and mustard, it is a very good plan to take with one a little food ready cooked; a roasted chicken and some cooked ham, or a small joint of meat comes in very acceptable for a meal taken *en route*, or when one lands up at one's destination after a long ride.

Also a few early potatoes, a lettuce or so from the home garden, and a little fruit are likely to be useful on first arrival, until one gets one's bearings locally. Above all, do not forget a store of drinking water.

CLOTHING AND OTHER NECESSITIES.

Clothing.—Let this combine lightness and warmth as closely as possible. There is no need for women caravanners to be dowdy with all the pretty woven or

knitted garments now so popular, and they might even include a thin slip-on frock in case of very hot weather, but mere finery garments are out of place. Men will probably be very amenable to reason in the matter of confining themselves to necessities, but they must not be allowed to pare down the list to the point of omitting a change or two of clothing in case of accidents; and for all caravanners one thing is absolutely necessary, and that is a thoroughly sound rain-proof garment. I strongly recommend one of the new rubber-proofed coats resembling leather, and now procurable in several colours, because these do not absorb the wet, but let it run off the surface, and are consequently dry in no time, and don't litter up the caravan. Overshoes have been found to be a boon and a blessing, because, when one's pitch is wet or muddy after a shower, one can slip overshoes off at the door of the van and so keep the floor clean.

Odds and Ends.—The mere male may scoff at this item, but he'll probably do much worse if his buttons come off and there is no thread to sew them on, or if he uses up the last match in his pocket and finds there is no reserve box, or if there is no paraffin for the stove. We are, alas! slaves of a complex civilisation, and many superfluities are almost necessities.

For many a camera will be of first-rate importance; for others a wireless set; for others again a bag of golf clubs; while writing materials, a few readable books, and a couple of packs of cards are all helps towards the agreeable passing of a wet day now and then.

Our road from our Midland home lay through Stourbridge, and afterwards the outskirts of Wolverhampton,



and so on through Shifnal to Shrewsbury: pleasant rural country all of it.

Of Telford's great highway it may be remarked generally that its present condition is not so good as formerly, and that its re-making is evidently to be undertaken in the near future, and it is indeed in places already begun, the very bad stretches coming in for first attention.

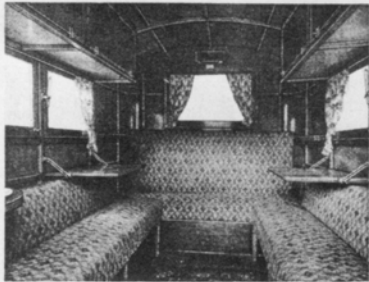
ON THE WAY.

At Shrewsbury, English bridge is being widened, but the temporary passage-way presented no difficulties, and the town, though always busily crowded, is very well policed. Further on, at Gobowen, we found a much-needed improvement carried out, in the construction of an excellent by-pass road of half a mile in length,

9 ft. 6 ins. Trailer Caravan

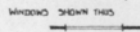
"ECCLES" 9ft. 6in. Trailer Caravan, furnished for four adults. The minimum horse power we recommend to draw this Caravan is 11.9.

CARAVAN No. 27-3



View from door, showing tables and seat.

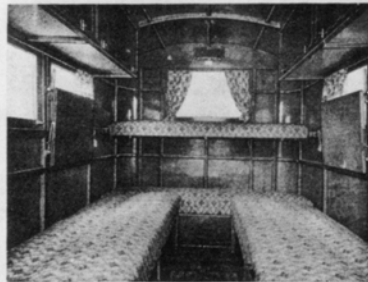
Fitted with five windows, all to open, also ventilator. The door has a Yale pattern lock, also step. Wardrobe. Washing bowl in hinge-up holder. Valor Perfection stove and oven in fire-proof recess. Portable food safe. Cupboard in coolest part of the Caravan for same. Two beds, 5ft. 11in. by 1ft. 11ins., two beds 5ft. gins. by 2ft. 2ins.—sprung and upholstered in good quality tapestry or other material. The beds fold back to make comfortable seats in the daytime. Two tables (may be hinged up at night).



WASH BOWL TO HINGE UP

One large locker for bedclothes. Two large lockers for stores. Lockers along each side under roof for almost the full length of the Caravan. Some of these lockers contain the following:—For four people: 4 Plates (large), 4 Plates (small), 1 Dish, 4 Cups, 4 Saucers, 2 Jugs, 1 Cruet, 2 Canisters, 1 Saucepan and Steamer, 1 Kettle, 1 Frying-pan, 1 Teapot, 4 Egg Cups. All fitted so that they cannot rattle or break in "ECCLES" special devices.

In Food Safe: 2 pie dishes 2 stew pans. Linoleum, curtains and rods, tail lamp bracket. All inside panelling and furniture hand french-polished. Four hinge-down legs.



View from door, showing tables hinged up and seats made into beds.

PRICE (at Works)

- Panelled in plywood and canvas, light polish **£158**
- Panelled in steel armoured plywood, light polish **£174**
- Panelled in plywood and canvas, mahogany polish, light roof and locker doors **£166**
- Panelled in steel armoured plywood, mahogany polish, light roof and locker doors **£182**

Double walls, i.e., an additional inside plywood panelling, in each case **£16** extra.

Wired with electric light, switch, and socket to connect to your Car **30/-** extra.

12 ft. Trailer Caravan

CARAVAN No. 27-4

A similar van to the foregoing is shown in the small plan, 12ft. long. This Caravan may be had in one or two compartments to accommodate four adults. The minimum horse power we recommend to draw this Caravan is 14 h.p. Fittings and furniture are as Caravan No. 27-3, also dividing curtain which may be hung across middle of Caravan, if doors are not fitted.

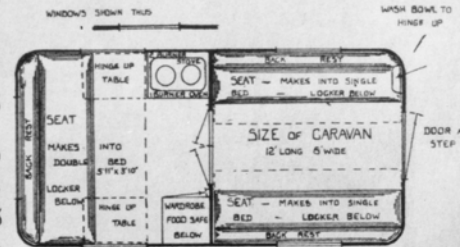
PRICES (at Works)

- Panelled in plywood and canvas, light polish **£195**
- Panelled in steel armoured plywood, light polish **£216**
- Panelled in plywood and canvas, mahogany polish, light roof and locker doors **£205**
- Panelled in steel armoured plywood, mahogany polish, light roof and locker doors **£224**

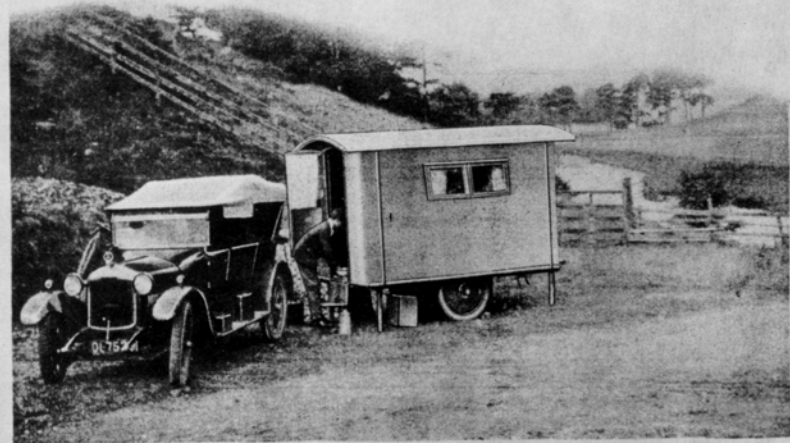
Double walls, i.e., additional inside plywood panelling, in each case **£19** extra.

Wired with two electric lights, switches, and socket to connect to your Car **45/-** extra.

If doors are required to divide the Caravan instead of the hanging curtain supplied, the price will be **£8** extra. The doors will be built in complete with a dividing partition.



PLEASE STATE WHEN ORDERING WHETHER DOORS OR CURTAIN DIVISION ARE REQUIRED



Exterior view taken in the Vale of Yarrow. All the straight sided, round cornered Caravans are very similar in exterior appearance.

10 Feet De Luxe Round

with **Ventilated Lantern Roof**, to accommodate four adults, i.e., two adults in double bed and two adults in single beds (or by our special conversion, another double bed). The minimum horse power we recommend to draw this trailer Caravan is 14-15.

CARAVAN No. 27-7

Fitted with five windows, all to open, also glazed ventilators in the lantern roof. The door is made with top half opening separately, and is fitted with step and Yale pattern lock. Wardrobe with bevel plate mirror. Lavatory basin in cabinet with draining board and waste to the outside, concealed when not in use by a lid, which forms a dresser. Chest of drawers.

Valor Perfection stove and oven in fireproof recess.

Portable food safe. Cupboard in the coolest part of the Caravan for same.

Settee couch which forms into luxurious double bed for two adults, 6ft. 2in. by 3ft. 9in.

Side seat which by our special conversion forms into two single beds or one double bed; single beds 5ft. 9in. by 1ft. 11in., double 5ft. 9in. by 3ft. 9in.

Two tables (which may be hinged up at night).

Large locker for bedclothes. Large locker for stores. Numerous lockers at the sides and end below the roof. Some of these lockers contain the following:—4 Plates (large), 4 Plates (small), 1 Dish, 4 Cups, 4 Saucers, 2 Jugs, 1 Cruet, 2 Canisters, 1 Saucepan and Steamer, 1 Kettle, 1 Frying-pan, 1 Teapot, 4 Egg Cups. In Food Safe: 2 Pie Dishes, 2 Stewpans. All fitted so that they cannot rattle or break in "ECCLES" special devices.

Settee and double bed are doubly sprung.

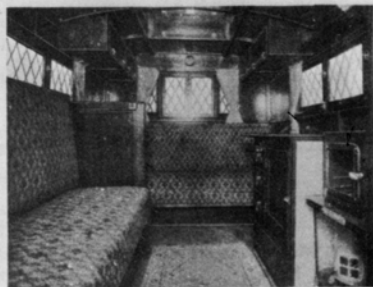
All seats are upholstered in good quality tapestry or other material, and the sleeping side of the double bed is upholstered in bed tick. All the inside panelling and furniture is french-polished by hand.

Linoleum, curtains and rods, tail lamp bracket.

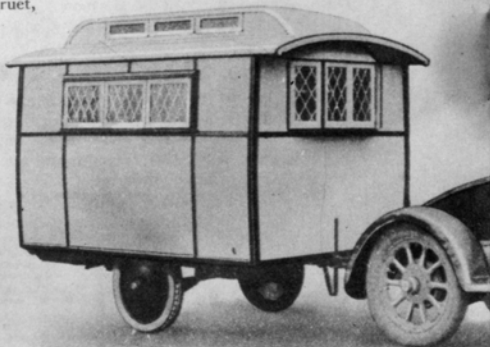
One "ECCLES" superior ceiling lamp with switch wired to socket to connect to your Car.

Four adjustable screw legs (registered design).

Dividing curtain which may be hung across middle of Caravan.

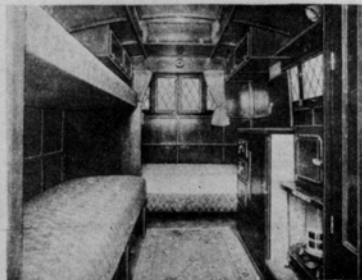
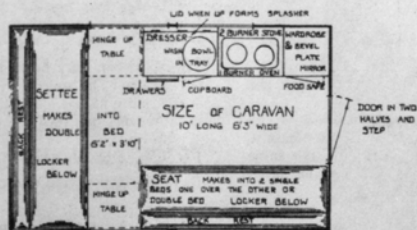


Interior, showing seats and leaded windows.



Sided Trailer Caravan

WINDOWS SHOWN THUS

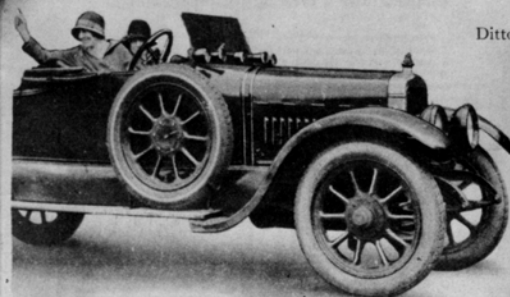


Interior showing back of side seat raised to make one bed over the other. This back, by an arrangement of slides, may also be put level with the bottom portion to make a wide bed for two.

PRICE (at Works)

- Panelled in plywood and canvas, light polish **£210**
- Panelled in steel armoured plywood, light polish **£231**
- Panelled in aluminium armoured plywood, light polish **£241**
- Panelled in steel armoured plywood, interior polish in Jacobean coloured oak with roof and roof locker bottoms light, dark mouldings, imitation lead-light windows, and small bay window at front **£240**
- Ditto aluminium armoured plywood **£251**

Double walls, i.e., additional inside plywood panelling, in each case, **£21 extra.**

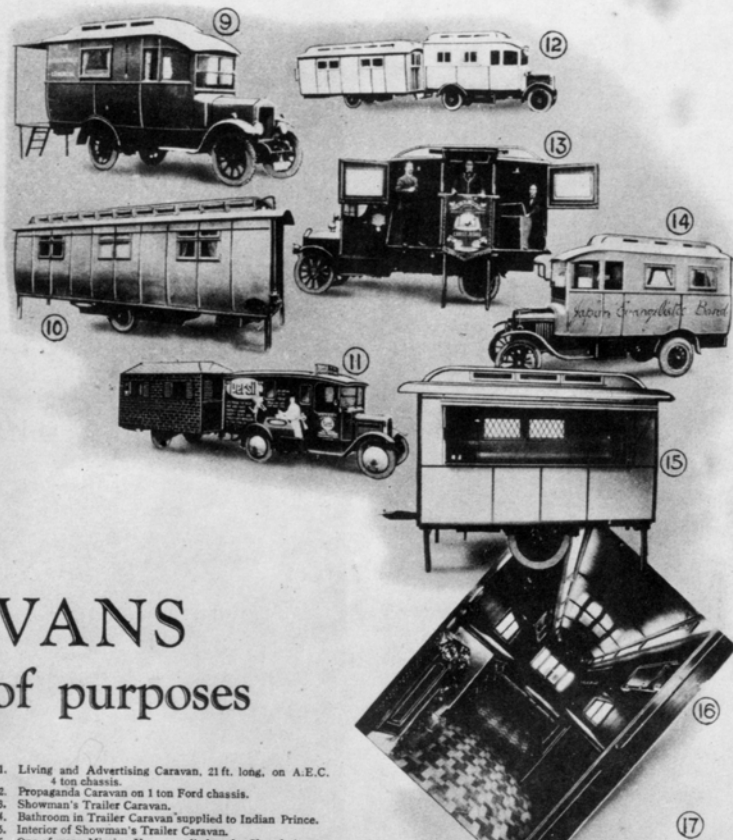
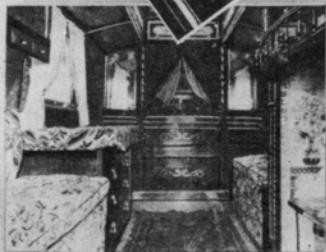


Exterior of Caravan No. 27-7. All De Luxe Caravans with leaded windows are very similar.



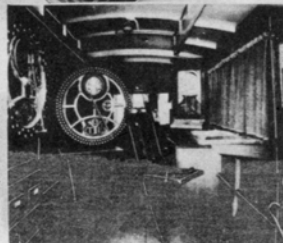
"ECCLES" for a variety

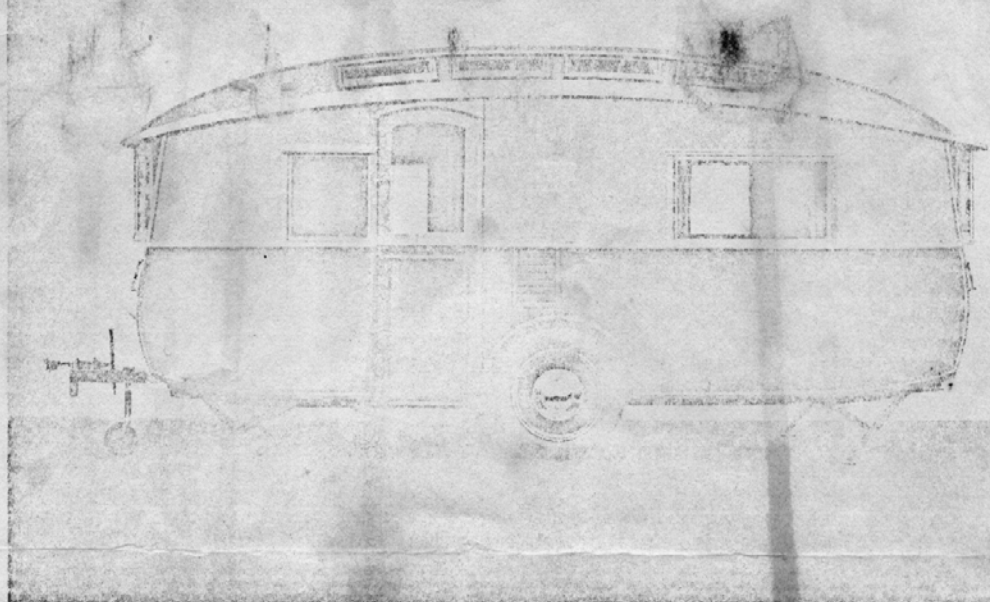
HEREON is a selection of unique vehicles which have been built by the ECCLES CARAVAN COMPANY, LIMITED. In addition to our listed models, it will be seen we build numerous vehicles to special orders and requirements. We are pleased to quote for, and prepare drawings of any motor Caravan or Trailer (provided we are satisfied it is going to be a practical proposition when made) for any special purpose. We should be happy to hear from you with your requirements and instructions. One thought strikes us on looking at these pages, that is, we are proud of what we have made, and our customers are proud also.



VANS of purposes

1. Living and Advertising Caravan, 21 ft. long, on A.E.C. 4 ton chassis.
2. Propaganda Caravan on 1 ton Ford chassis.
3. Showman's Trailer Caravan.
4. Bathroom in Trailer Caravan supplied to Indian Prince.
5. Interior of Showman's Trailer Caravan.
6. One of many Mission Vans supplied to the Church Army.
7. Demonstration Trailer for Messrs. Crittall Metal Windows.
8. Mission Trailer Caravan supplied to the Salvation Army.
9. Mission Caravan supplied to the Anglo-Catholic Congress.
10. Trailer Caravan supplied to Indian Prince, for use as a "movable hunting box."
11. Demonstration Wash-house Trailer (with opening sides) supplied to Messrs. Joseph Crossfield & Son.
12. Saloon Living Trailer Caravan and Kitchen on 25 cwt. Vulcan chassis.
13. Gospel Wagon supplied to the Open Air Mission.
14. Mission Van supplied to Japan for the Japan Evangelistic Band.
15. Trailer Refreshment Stall, showing side open.
16. Interior of luxurious Saloon Caravan, built to special order.
17. Demonstration Travelling Showroom supplied to Messrs. Vote Time Clocks.





SPECIFICATION of the "ARISTOCRAT"

Dimensions. 16 feet 6 inches long, 6 feet 6 inches wide. Insulated cavity walls and roof. Four berths. Chrome-plated metal windows all to open. Glazed ventilators in lantern roof. Two-piece door, glazed light in top half. Completely equipped kitchen, with gas stove and oven, large ventilated food cupboards, draining board and sink with water supply from 12-gallon rust-proof tank. Cupboards with tableware and utensils in rattleproof clips. Dining room with rigid foldaway table and side seats to seat six comfortably. Beds of deep multi-sprung pattern, with loose covers. Wardrobe in each compartment with ample cupboard and locker space for bed linen and clothes. Separate washbasin in rear compartment. Gas fire. Built-in radio. Gas and electric lamps. Full equipment for six persons, as listed on page 18.

COMPLETE AT WORKS:

£357

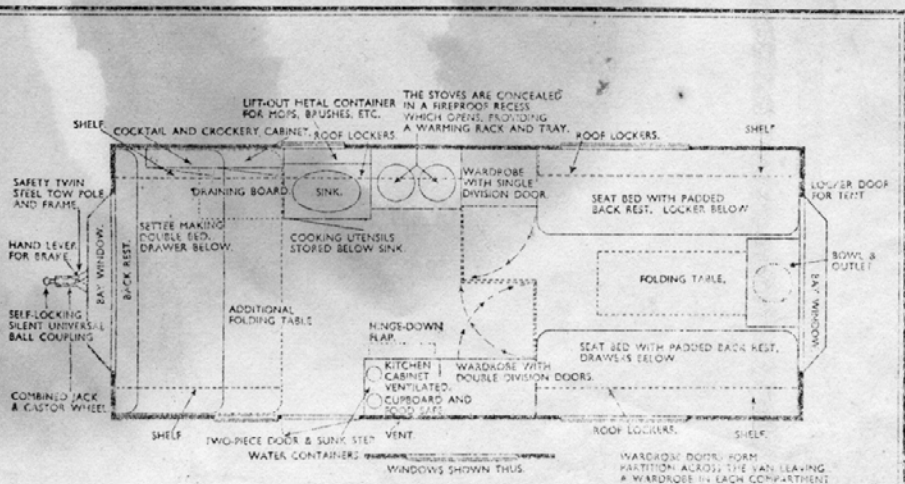
As above but oil burning cooker and lamp instead of gas

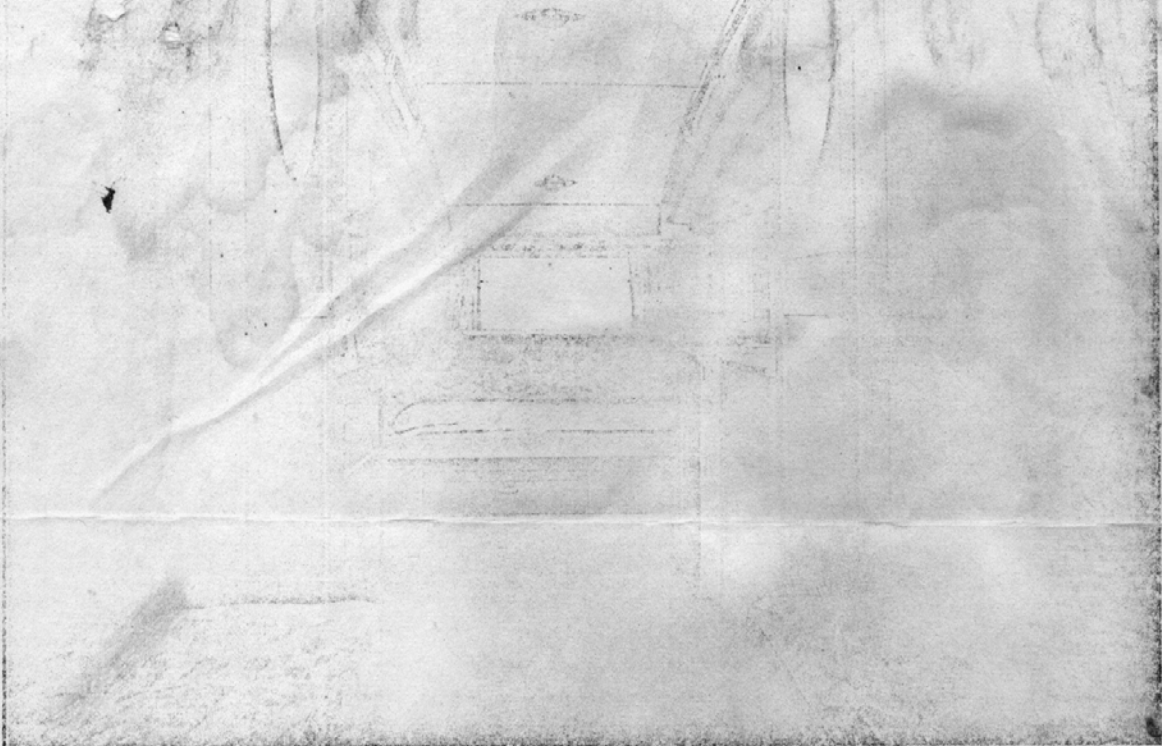
£345

at Works.

Kindly specify price of model when ordering.

Page 13





The renowned Eccles "Aristocrat"

This caravan has already proved very attractive to buyers in the luxury class of caravans and in fact the 1938 "Aristocrat" differs from its 1937 predecessor only in minor details. In addition to double panelling, walls and lantern roof are insulated. One of many very attractive features of this caravan is the fact that there are two wardrobes and when the doors of each are opened to form the partition between the double and the two single beds, a wardrobe is provided in each room. From the plan on the opposite page it will be seen also that there is a wash basin in each compartment, one with pump feed from the main tank under the floor. It is difficult to do justice in print, to the very beautiful interior of the "Aristocrat." The luxurious upholstery and curtains colourfully set off the neat and well constructed cupboards and lockers. The concealed gas stove, kitchenette, sink and other fittings have been most carefully arranged to provide the maximum of convenience and every-

thing is just where it is needed. Calor gas equipment is used for cooking, heating and lighting, the latter by well-placed incandescent lamps. Oil cooking, etc., can be offered as an alternative if so desired. Undoubtedly the new "Aristocrat" will enhance the good name already so well earned by its predecessor.

